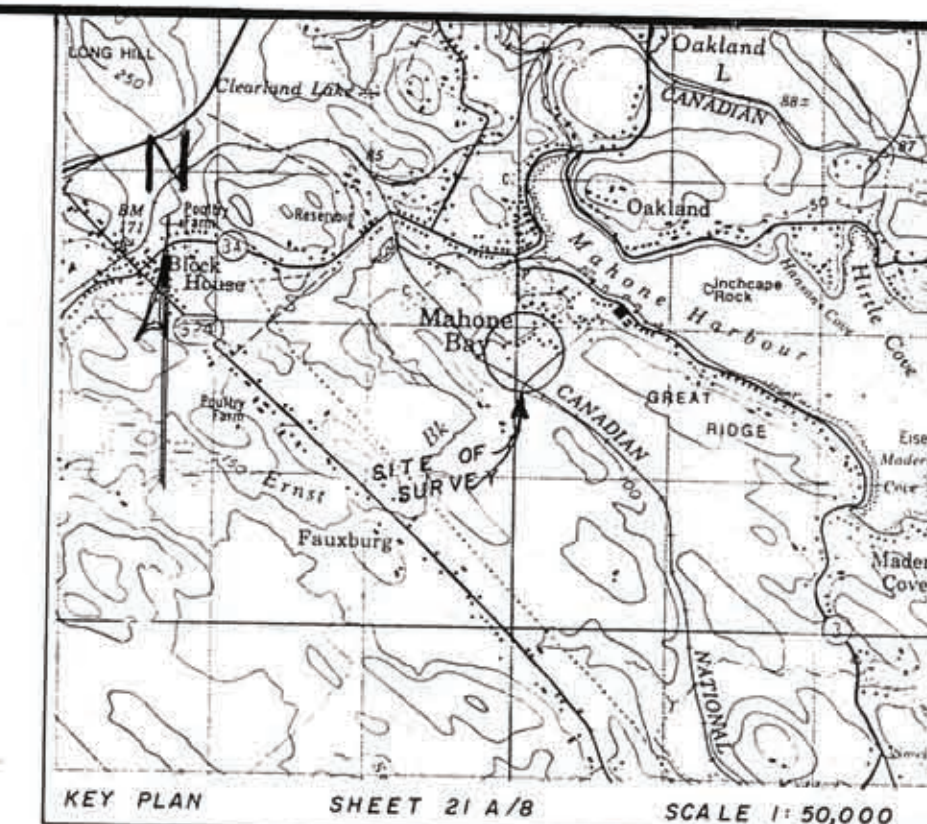
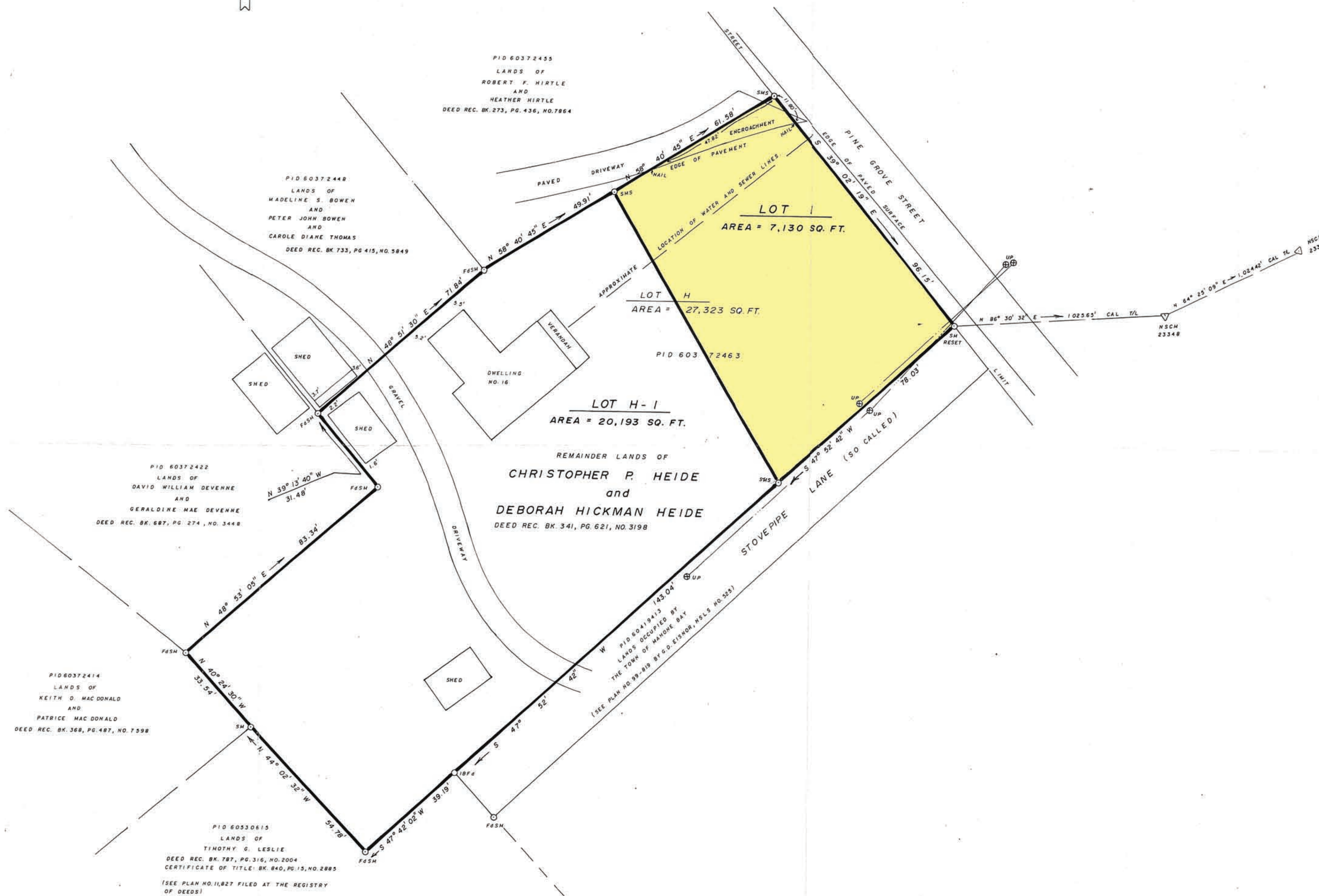


THIS FINAL PLAN OF SUBDIVISION IS APPROVED FOR LOT(S) NO. 1
 ENDORSED ll DEVELOPMENT OFFICER
 DATE 29 January 2004

ACCESS TO THE PUBLIC STREET AS SHOWN HAS BEEN APPROVED FOR THE LOTS CREATED BY THIS FINAL PLAN AND ANY CONDITIONS WHICH APPLY ARE LISTED ON THE PLAN. THE PLAN CONTAINS A REPORT DATED 29 December 2003 AND IS SUBJECT TO THE AUTHORITY HAVING JURISDICTION FOR PUBLIC STREETS.

NOTE
 LOTS 1
 ARE SERVED OR CAN BE SERVED WITH A CENTRAL SEWER.

A copy of this plan has been filed in the registry of Deeds, Book 368, Page 487, in motor file MB 030.05

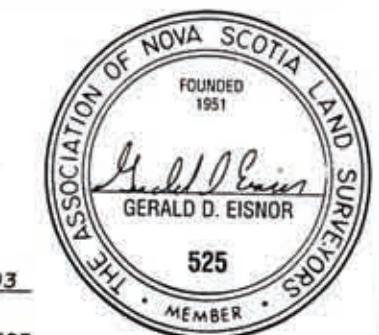


REQUEST APPROVAL FOR LOT 1,
 TO BE SERVICED BY CENTRAL SEWER AND WATER

- LEGEND
- Boundary of lands surveyed
 - Boundary of adjacent lands
 - Overhead utility line
 - Line not to scale
 - X-X-X-X-X- Fence line
 - o Centerline
 - UP Utility Pole
 - N.S.C.M. Nova Scotia Control Monument
 - SM Survey Marker (iron bar with identification cap)
 - IB Iron Bar
 - IP Iron Pipe
 - CC Cross Cut
 - WB Wooden Bound
 - RP Rock Post
 - TS Traverse Station
 - Fd Found
 - S Set
 - CAL Calculated
 - T/L Tie Line
 - BC Beginning of Curve
 - EC End of Curve
 - WIT Witness

All angles and distances were measured in the field, unless otherwise noted, and are unadjusted.
 No scale factor has been applied, unless otherwise noted.
 THE BEARINGS ARE: MAGNETIC for the year X
 GRID based on the 3rd modified transverse mercator projection having central meridian 64°-30' west and are referenced to Nova Scotia Control Monument numbers
 See PLAN No. 99-819 by G.D. EISNOR, N.S.L.S. No. 525

SURVEYOR'S CERTIFICATE
 I, Gerald D. Eisnor, Nova Scotia Land Surveyor, hereby certify that the survey represented by this plan was conducted under my supervision, and that the survey and plan were made in accordance with the Nova Scotia Land Surveyors Act and the regulations made thereunder.



Dated this 9 day of DEC. A.D. 1903
Gerald D. Eisnor N.S.L.S. No. 525

PLAN OF SUBDIVISION SHOWING LOT 1 AND LOT H-1 LANDS OF CHRISTOPHER P. HEIDE & DEBORAH HICKMAN HEIDE LOCATED AT MAHONE BAY, LUNenburg COUNTY, NOVA SCOTIA.

REVISIONS:

Gerald D. EISNOR
 N.S.L.S. #525
 Subdivision and Woodland Surveys
 Aquaculture Lease
 Boundary Surveys
 Location Certificates
 Phone and Fax
634-3614
 RR 3, Lunenburg (Fauxburg), Lunenburg County, NS B0J 2C0

Field surveys were carried out during the period of
 DRAWN BY: REID LOHNES
 DATE: DEC. 9, 2003
 SCALE: 1" = 20'
 PLAN NO: 03-1104
 OF NOVA SCOTIA LAND SURVEYORS
 No. 54348

000594
 Filed Bridgewater Registry, the 30 day of
January A.D. 2004 at 3:36 o'clock P.M.
 as No. 12,641
Jean Plunkett Registrar

TOWN OF MAHONE BAY
 SUBDIVISION APPLICATION NUMBER
MB 030.05
 FINAL