

223 Pelham Street, Lunenburg

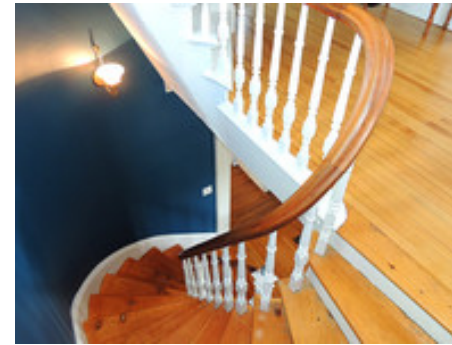
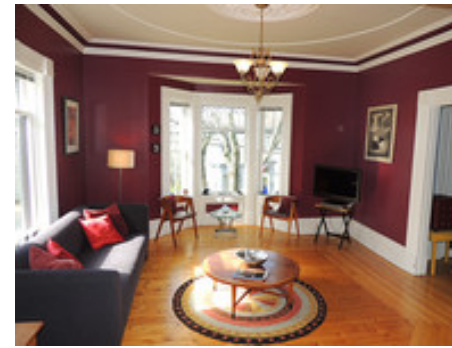


Magical Mystery 'Tower' **\$299,000**

Ready to be charmed? This magical home enchants with character and interesting features, including a 2-tier front verandah, bay windows & dormers, refinished floors, high ceilings with medallions & cove moldings, even a 3rd floor tower! The striking home is set high above the street on a professionally landscaped double lot with views of Lunenburg harbour, surrounded by other wonderful heritage homes. Inside, find great light and flow between expansive principal rooms. The Dining Room has double French doors to access a large back deck. The custom Kitchen has plenty of cupboard space and a centre island, plus a walkout to the front verandah. Upstairs, there's 3 spacious bedrooms plus walkout to a 2nd floor balcony with amazing rooftop and water views. Best of all though, is the spectacular curving staircase which winds its way up 3 floors to a lovely little room in the peak of the tower, a space so special even Rapunzel wouldn't let down her hair! Indeed, people who love old houses dream of spaces like this! Truly a unique home unlike any other in a town known for its unique homes!



see full details for this and other fine properties at:
www.OceanHomesNovaScotia.com



Listing Agents

Adam Dial C: 902-298-0336
E: adam@reddoorrealty.ca

Cindy Dial C: 902-298-0332
E: cindy@reddoorrealty.ca

Property Highlights

Age ±: c. 1881-1890

Lot Size: 6458 sq ft

Style: Victorian w/ Mansard Roof & Tower

Floor Space: 2220 sq ft

Bedrooms: 3

Bathrooms: 1.5

Flooring: hardwood, softwood, laminate, cushion

Heating: oil-fired forced hot air

Parking: gravel driveway for 2 vehicles

Garage: single detached (18'7 x 14'7)

Services: electricity, phone, cable, high-speed internet (FibreOP available)

Features: double corner lot, back deck, 2-tier front verandah, 3rd floor tower

Assessment: \$409,900 (2013)

Taxes: \$5,242 (2013)

Rooms

Kitchen: 16'7" x 11'5" (Main)

Dining Room: 14'1" x 12'3" (Main)

Living Room: 14'1" x 13'8" (+ bay) (Main)

Foyer/Hall: 11' x 9'5" (Main)

Powder Room (2-pc): 6'5" x 3'7" (Main)

Laundry: 13'1" x 3'10" (Main)

Master Bedroom: 14'4" x 13'5" (2nd)

Bedroom: 14' x 9'7" (2nd)

Bedroom: 12' x 12' (2nd)

Bath (4-pc): 8'8" x 7'10" (2nd)

Upper Hall: 12'8" x 8' (2nd)

Tower Room: 9' x 8'3" (3rd)

Directions

Town of Lunenburg, corner of Pelham & Hill Streets. Look for the Coastal Winds Realty sign!