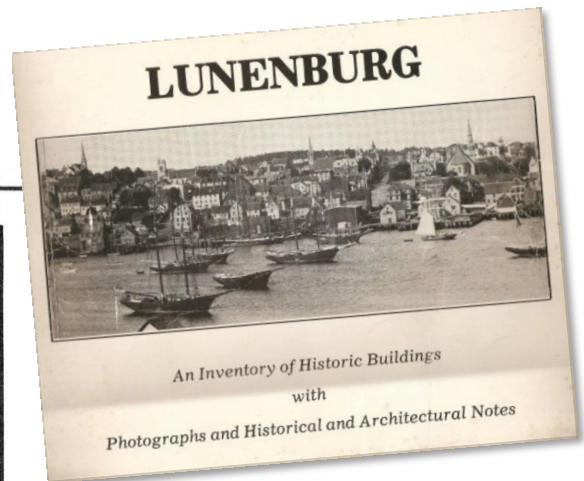


73 GREEN STREET, LUNENBURG

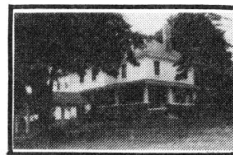
Historic & Architectural Notes

From *Lunenburg: An Inventory of Historic Buildings*



#73 Green

1922



This property was originally a part of Common Range lot #3 and, during the 1800's, belonged to the Rev. William Duff (see #167 Victoria). The old farm lot ran from Green St., across a swampy area to Victoria Road and then across Victoria Road up the hill to the back line of the Common Range lots. Following Rev. Duff's death in 1888, the property passed on to his heirs and this section of swamp and pasture between Victoria Road and Green St. was subdivided from the rest. In 1919, the subdivided area was acquired by John J. Kinley and this large residence was built for him 3 years later.

John J. Kinley was born in 1881, the son of James F. Kinley (see #49 Falkland). Following his education at

the Lunenburg Academy he studied pharmacy and apprenticed with E.L. Nash (see #174 Lincoln). In 1902, he opened a drug store which was the first of a chain of stores that later served several South Shore Towns. In 1907, he and several other Lunenburg businessmen bought the Lunenburg Foundry, which had been destroyed by fire, and rebuilt the Company. He served for 50 years as President of that successful business (see Lunenburg Foundry, #16 Brook).

He served for several years on the Town Council and held the office of Mayor from 1911-13. In 1916, he was elected to the N.S. Legislature and served until 1924, and again from 1928-30. In 1935, he was elected to the House of Commons and

served as M.P. until 1945 when he was appointed to the Senate.

This esteemed gentleman was also intimately connected with the "Bluenose" tradition in that he helped to organize the first international fishing schooner races in the 1930's. He was also actively involved with the Canadian Militia, the Navy League of Canada, the Presbyterian Church, and the I.O.O.F.

John J. Kinley married Lila E. Young, daughter of John B. Young (see #116 Montague) in 1920 and they had 3 children. Senator Kinley died in 1971 and his wife in more recent years. Their son, John J. (Jim) Kinley took over from his father as President of the Lunenburg Foundry and now lives in the family home.



The Kinley house is a grand, 2 storey, hip roofed structure with a central projecting frontispiece containing the main door, and a sturdy, partially enclosed veranda skirting it at first floor level. The veranda foundation is formed from cut stone and gives the house a solid and permanent appearance. There are wide, overhanging eaves ornamented with multiple modillions, and the house is shingled and trimmed with wide cornerboards. A large portecochere extends out from the front of the house and adds to its mansion-like character. Extensive, well landscaped grounds provide a spacious setting for this not very old but nevertheless significant building.