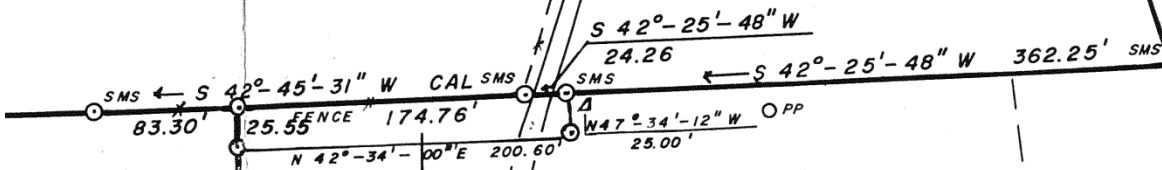


LANDS OF

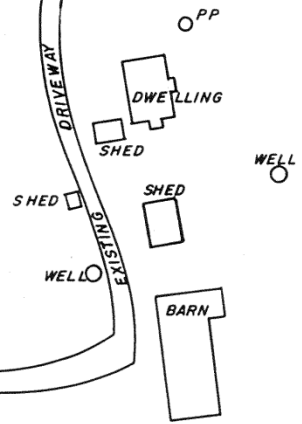
CHARLES H. AND EVA OICKLE

DEED REC. BK. 401, PG. 348, NO. 4403



RIGHT-OF-WAY TO LOT 1

FIELD



LOT 1-A

CULTIVATED

FIELD

AREA: 12.73 ACRES (+,-)

S 45°-46'-01" E
891.22' OF

EDGE

FIELD

CULTIVATED

OF

N 45°-00'-54" W
200.74'

LANDS OF
BRADLEY
AND
MARILYN
TREMERE

DEED REC. BK. 318
PG. 113
NO. 34

EDGE

N 43°-30'-00" E
SMF 151.93' → SMF

S 43°-41'-30" W
SMF ← 152.23' SMF

N 57°-30'-45" W
573.56'

OF

SURFACE

GRAVEL

DEAD END

N 42°-41'-48" E 540.49' CAL →

LANDS OF

TODD E. AND BARBARA A. WENTZELL

DEED REC. BK. 390, PG. 553, NO. 10149

SMS 116.76' SMF

SMF

N 38°-44'-58" W
151.89' CAL →

TO ROUTE NO. 3A

ROUTE NO. 484

MINES ROAD

OF

SURFACE

GRAVEL

DEAD END