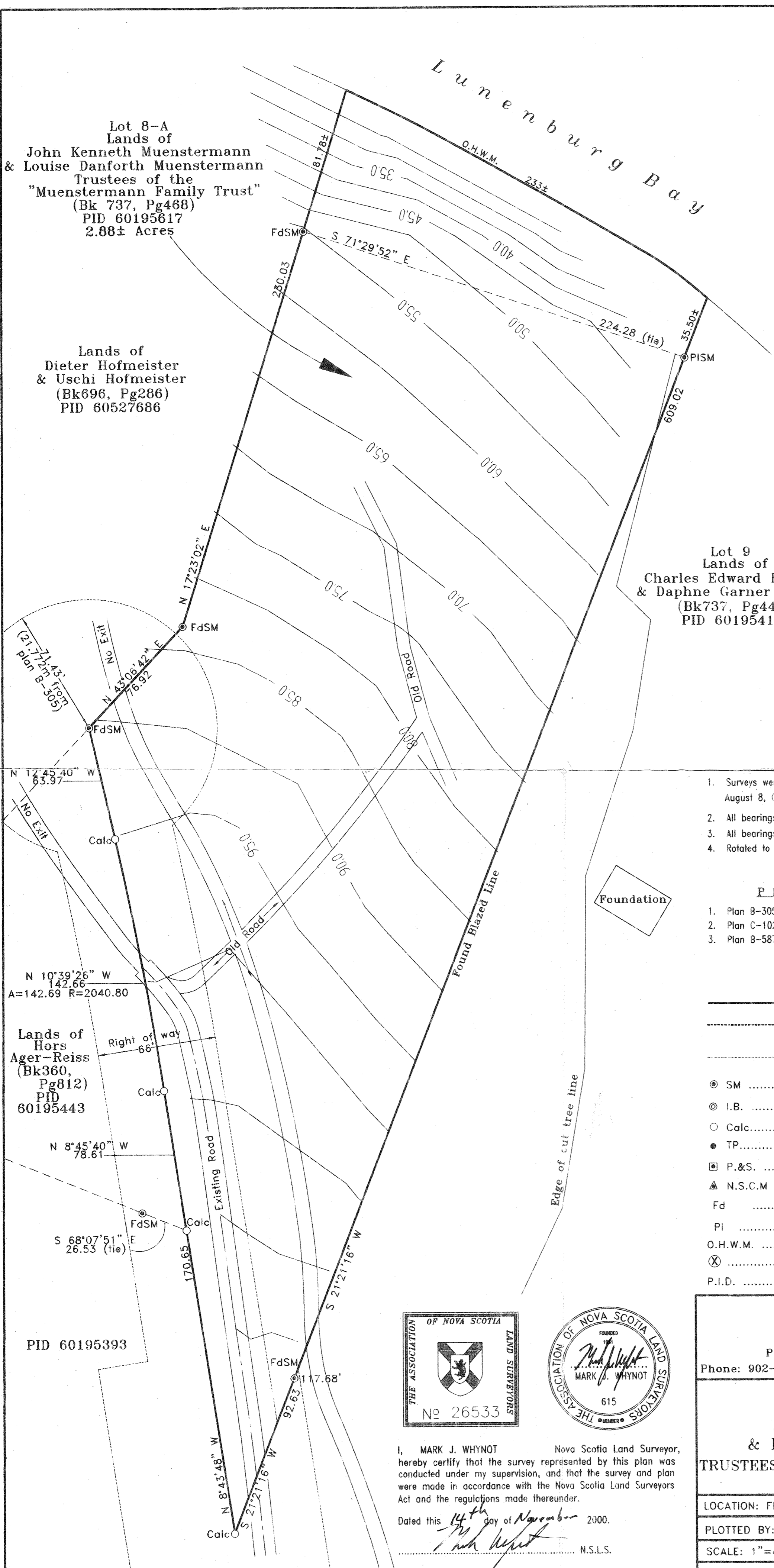


KEY PLAN 1:50000

Lot 8-A  
Lands of  
John Kenneth Muenstermann  
& Louise Danforth Muenstermann  
Trustees of the  
"Muenstermann Family Trust"  
(Bk 737, Pg468)  
PID 60195617  
2.88± Acres

Lands of  
Dieter Hofmeister  
& Uschi Hofmeister  
(Bk696, Pg286)  
PID 60527686

Lot 9  
Lands of  
Charles Edward Hopson  
& Daphne Garner Hopson  
(Bk737, Pg445)  
PID 60195419



NOTES

1. Surveys were carried out during the period of August 8, October 10 & October 13, 2000.
2. All bearings and distances are unadjusted.
3. All bearings are Magnetic 1986.
4. Rotated to plan B-305 by R.L. Hunt, NSLS.

PLANS USED

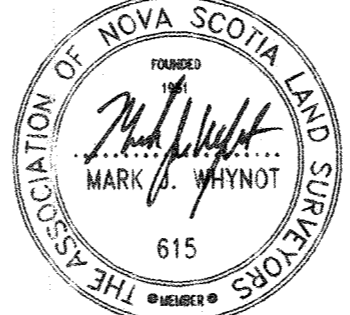
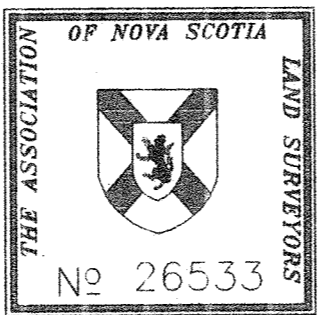
1. Plan B-305 by R.L. Hunt, NSLS, 1986.
2. Plan C-102 by R.L. Hunt, NSLS, 1983.
3. Plan B-587 by R.L. Hunt, NSLS, 1990.

LEGEND

- Lands dealt with by this plan
- Common boundary line as per provincial subdivision regulations.
- Adjoining boundary line
- ⊙ SM ..... ( Survey Marker ) iron bar with aluminium cap
- ⊙ I.B. .... Iron bar
- Calc..... Calculated Point
- TP..... Traverse Point
- ⊠ P.&S. .... Post & Stones
- ▲ N.S.C.M ..... Nova Scotia Coordinate Monument
- Fd ..... Found
- Pi ..... Placed
- O.H.W.M. .... Ordinary High Water Mark
- ⊗ ..... Cut Cross
- P.I.D. .... Parcel Identification Number

Lands of  
Hors  
Ager-Reiss  
(Bk360,  
Pg812)  
PID  
60195443

PID 60195393



I, MARK J. WHYNOT Nova Scotia Land Surveyor,  
hereby certify that the survey represented by this plan was  
conducted under my supervision, and that the survey and plan  
were made in accordance with the Nova Scotia Land Surveyors  
Act and the regulations made thereunder.

Dated this 14<sup>th</sup> day of November 2000.  
*Mark J. Whynot* N.S.L.S.

**GEOMAP SURVEYING INC.**  
NOVA SCOTIA LAND SURVEYOR  
P.O. Box 114 Liverpool, Queens Co., Nova Scotia  
Phone: 902-354-5182 BOT 1K0 Fax: 902-354-3949

TOPOGRAPHIC PLAN SHOWING  
LANDS OF  
**JOHN KENNETH MUENSTERMANN  
& LOUISE DANFORTH MUENSTERMANN**  
TRUSTEES OF THE "MUENSTERMANN FAMILY TRUST"  
(5' CONTOUR INTERVALS)

LOCATION: FELTZEN SOUTH, LUNENBURG COUNTY, NOVA SCOTIA.

PLOTTED BY: PM	DRAWN BY: PM	JOB #: 4492-2
SCALE: 1"=40'		PLAN NO.
DRAWN: NOVEMBER 14, 2000		<b>B-1091T</b>