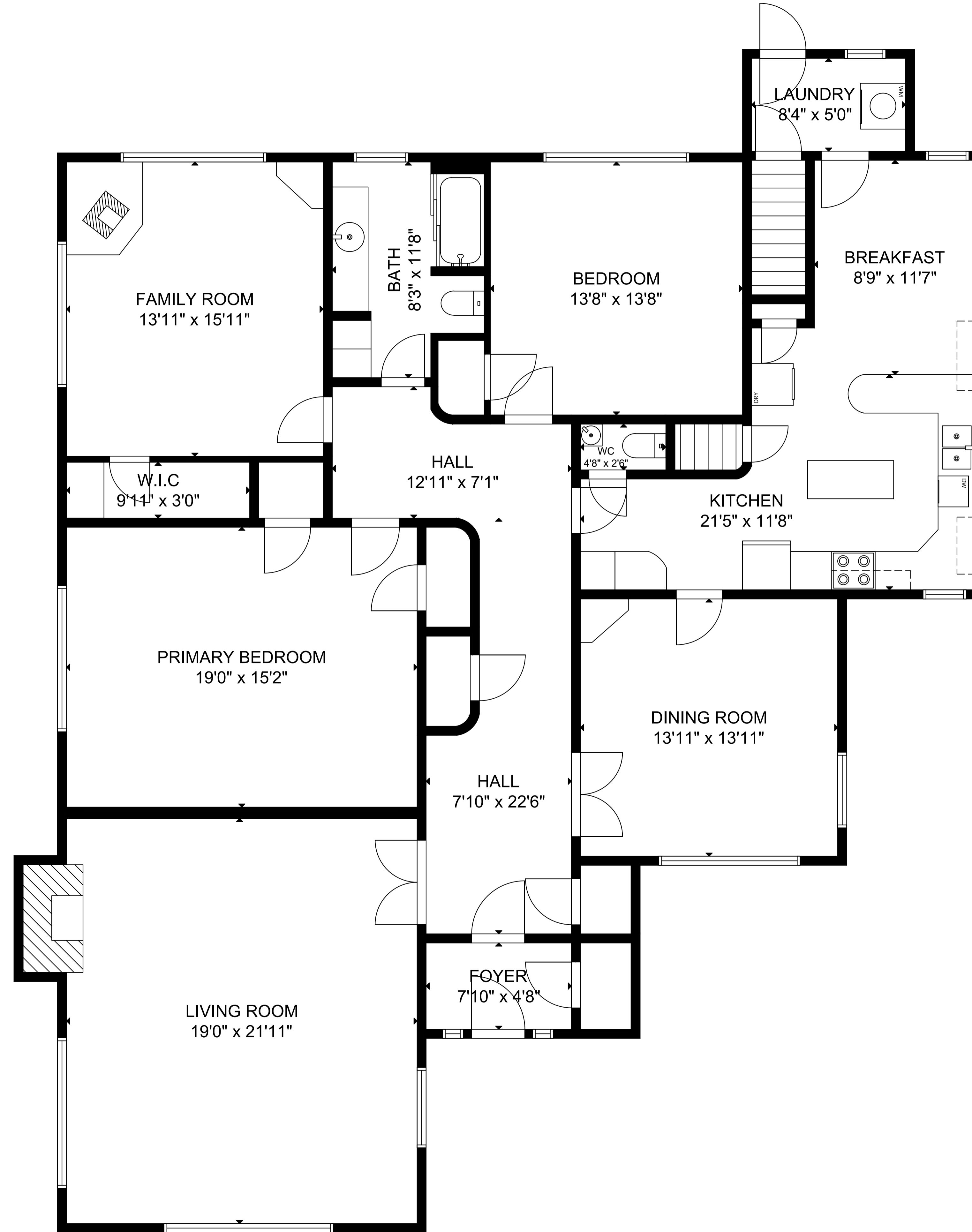


109 Brook St



GROSS INTERNAL AREA

TOTAL: 5,122 sq ft

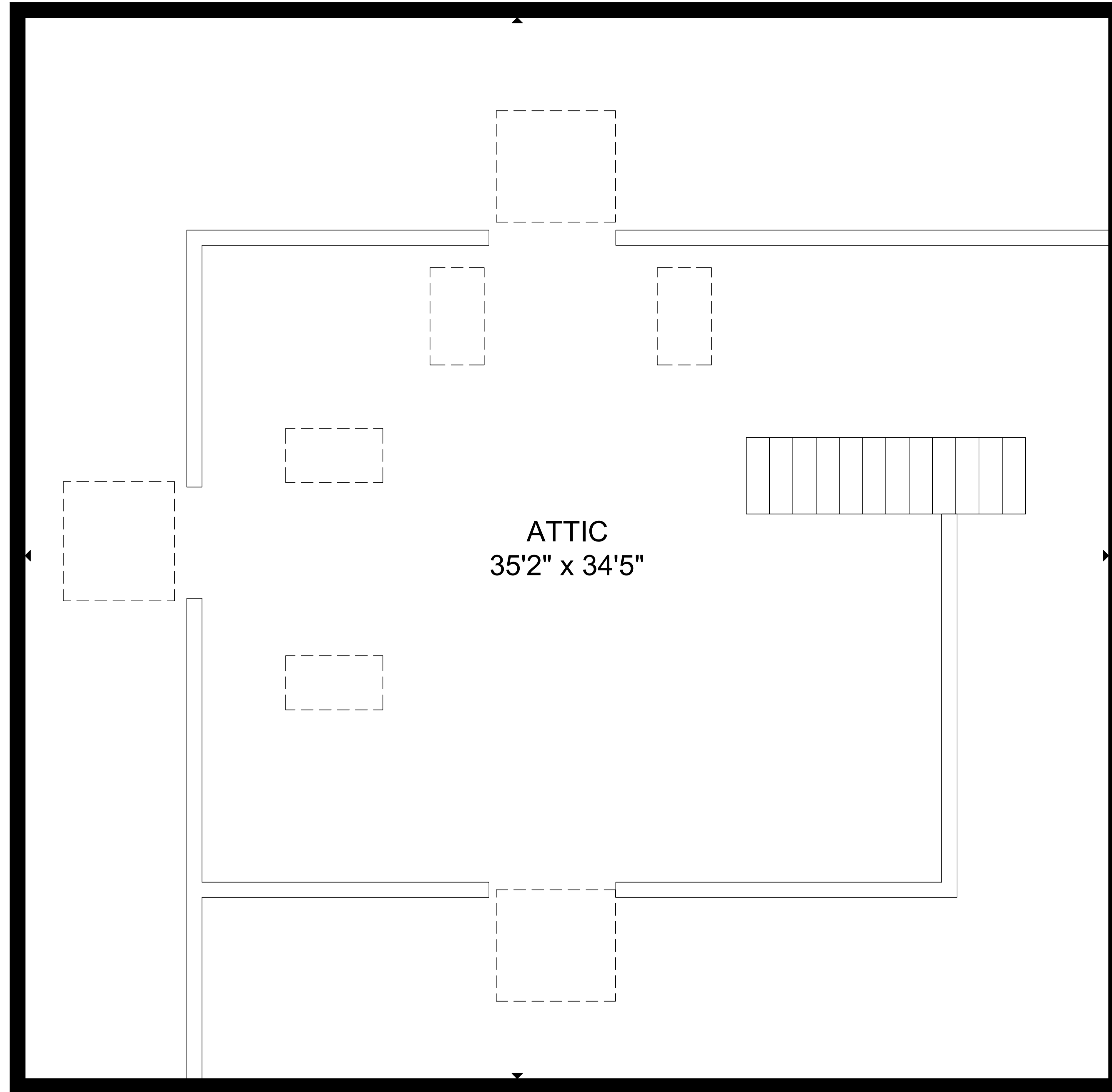
FLOOR 1: 1,622 sq ft, FLOOR 2: 2,292 sq ft

FLOOR 3: 1,208 sq ft

EXCLUDED AREA: GARAGE: 523 sq ft

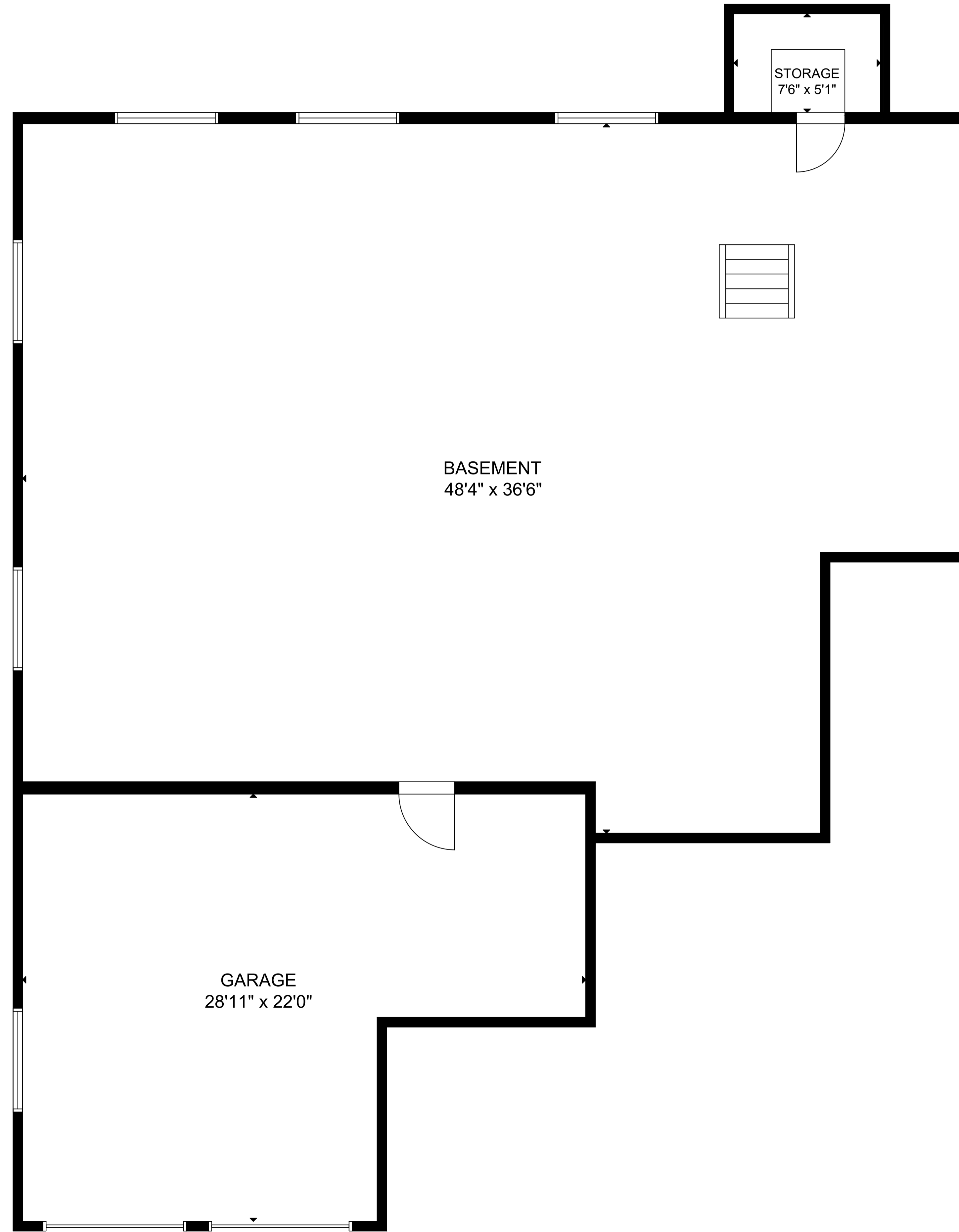
SIZE AND DIMENSIONS ARE APPROXIMATE, ACTUAL MAY VARY.

109 Brook St



ATTIC
35'2" x 34'5"

109 Brook St



BASEMENT
48'4" x 36'6"

STORAGE
7'6" x 5'1"

GARAGE
28'11" x 22'0"

GROSS INTERNAL AREA
TOTAL: 5,122 sq ft
FLOOR 1: 1,622 sq ft, FLOOR 2: 2,292 sq ft
FLOOR 3: 1,208 sq ft
EXCLUDED AREA: GARAGE: 523 sq ft
SIZE AND DIMENSIONS ARE APPROXIMATE, ACTUAL MAY VARY.

FLOOR 1