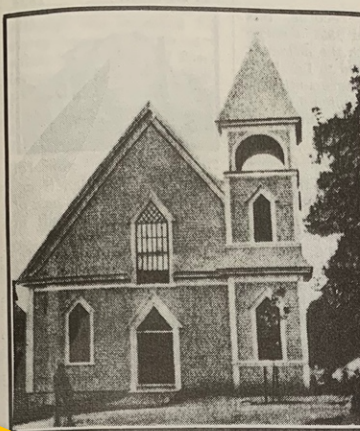
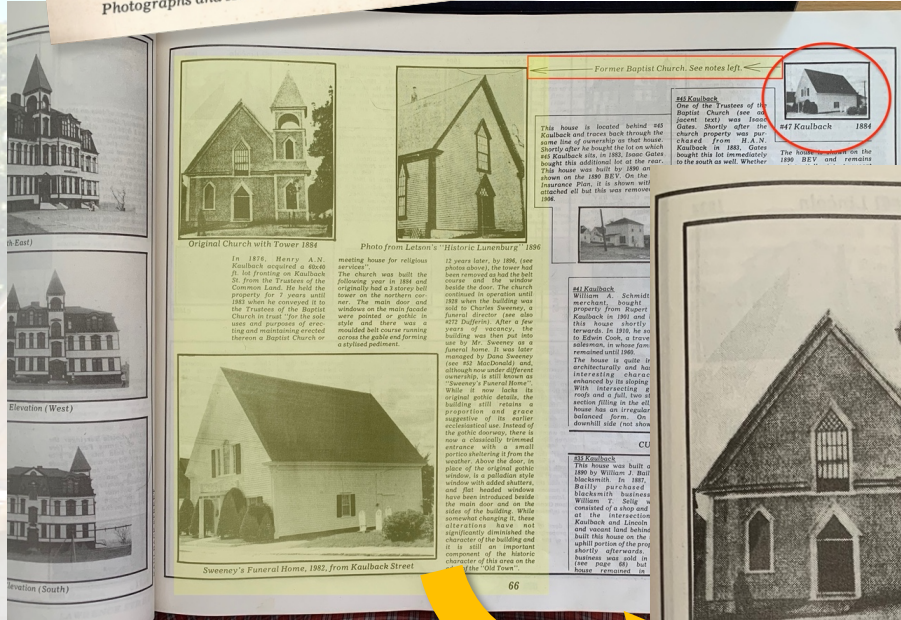
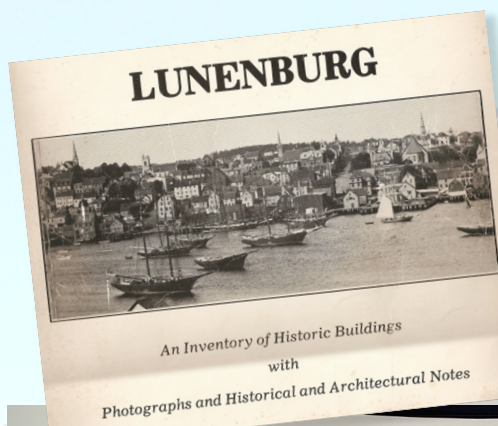


Historic & Architectural Notes from the 'Lunenburg Inventory of Historic Buildings'



Original Church with Tower 1884

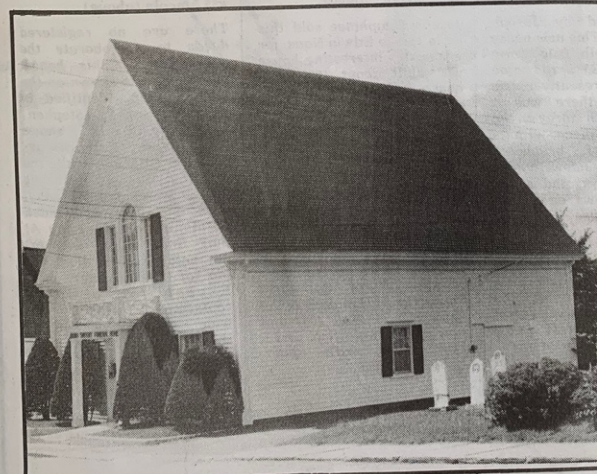
In 1876, Henry A.N. Kaulback acquired a 60x40 ft. lot fronting on Kaulbach St. from the Trustees of the Common Land. He held the property for 7 years until 1883 when he conveyed it to the Trustees of the Baptist Church in trust "for the sole uses and purposes of erecting and maintaining erected thereon a Baptist Church or

meeting house for religious services". The church was built the following year in 1884 and originally had a 3 storey bell tower on the northern corner. The main door and windows on the main facade were pointed or gothic in style and there was a moulded belt course running across the gable end forming a stylised pediment.



Photo from Letson's "Historic Lunenburg" 1896

12 years later, by 1896, (see photos above), the tower had been removed as had the belt course and the window beside the door. The church continued in operation until 1928 when the building was sold to Charles Sweeney, a funeral director (see also #272 Dufferin). After a few years of vacancy, the building was then put into use by Mr. Sweeney as a funeral home. A Sweeney was later managed by Dana Sweeney (see #52 MacDonald) and, although now under different ownership, is still known as "Sweeney's Funeral Home". While it now lacks its original gothic details, the building still retains a proportion and grace suggestive of its earlier ecclesiastical use. Instead of the gothic doorway, there is now a classically trimmed entrance with a small portico sheltering it from the weather. Above the door, in place of the original gothic window, is a palladian style window with added shutters, and flat headed windows have been introduced beside the main door and on the sides of the building. While somewhat changing it, these alterations have not significantly diminished the character of the building and it is still an important component of the historic character of this area on the edge of the "Old Town".



Sweeney's Funeral Home, 1982, from Kaulbach Street